

★ helping kids learn and grow ★  
the **popet**  
green **SPOT**

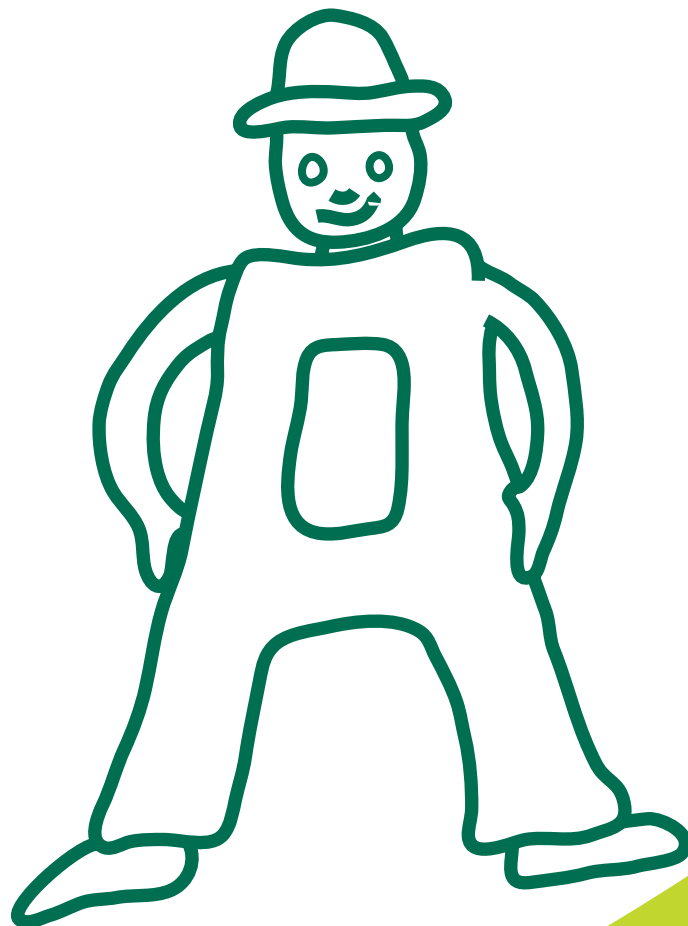
★  
ages 4-6

**LITERACY**

Internet Code: GR0002

# ALPHABET

## think pack - 1



helping kids learn and grow



**popet**

## ALPHABET think pack - 1

This eWorkbook helps the child learn to recognise the letters of the alphabet and the common sound that each letter represents. Each of the 26 fun eWorksheets focuses on a letter, provides practice in recognising and writing the letter and encourages the child to think about the letter.

These stimulating eWorksheets will help your child make associations for each letter and its sound, aiding the development of early literacy skills.

Published by POPET Pty Ltd  
PO Box 211  
South Bexley  
NSW 2207  
AUSTRALIA

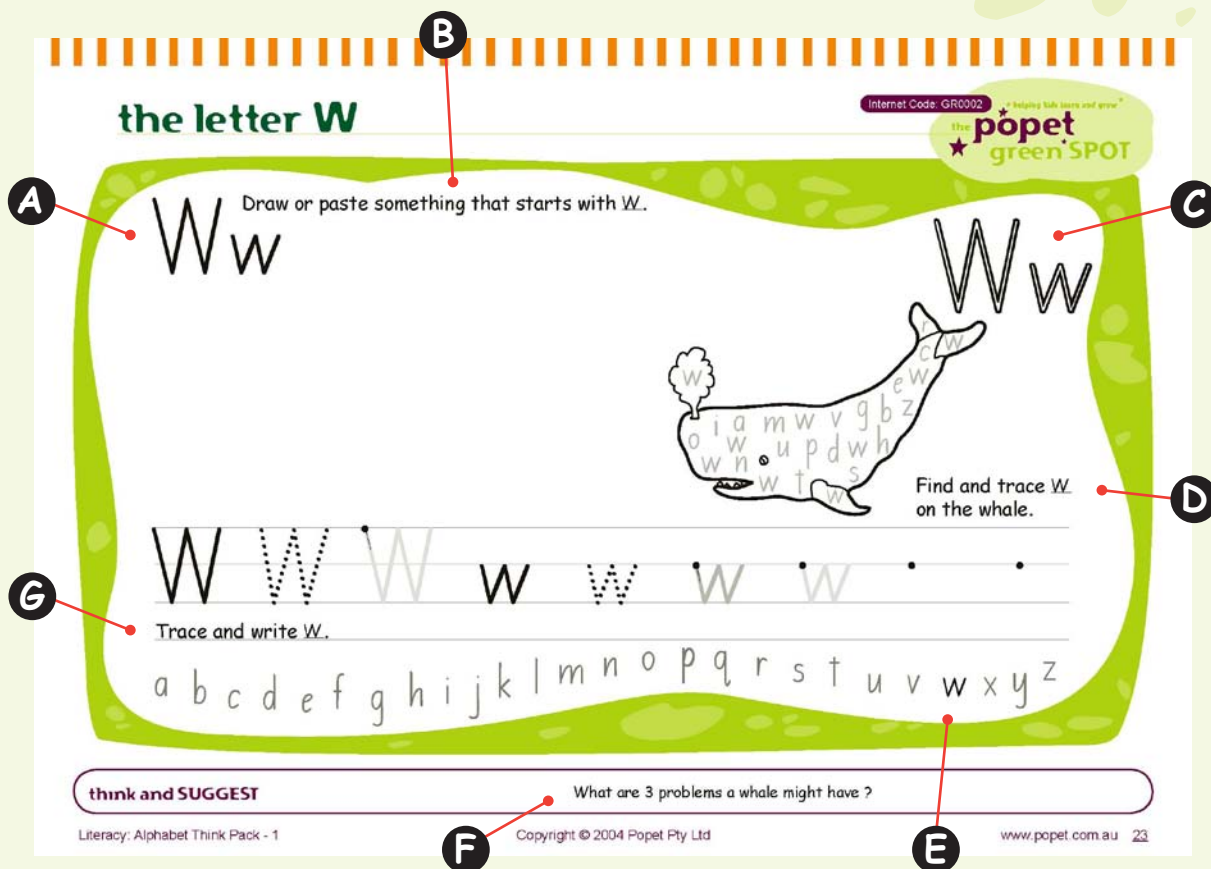
Some images © 2003- 2004 [www.clipart.com](http://www.clipart.com)

Copyright © 2004 Popet Pty Ltd  
All rights reserved

ISBN 978-1-74153-013-1

The material in this eWorkbook may only be used and printed by the original purchaser for private or domestic purposes. This material must not be used for any commercial purpose, including promotion of any supplier's products or services, without the prior written permission of Popet Pty Ltd. This material must not be placed on any server or website for others to access. This material must not be distributed to others. Others wanting access to this material must visit the popet™ website at [www.popet.com.au](http://www.popet.com.au) to obtain it legally.

## HOW TO USE THIS PACK



**A** The focus letter is clearly printed in the top left. Tell the child the name of the letter and the sound the letter makes. Trace the letter with your finger.

**B** Space is provided for the child to identify objects that start with the focus letter. Name some objects that start with the sound of the focus letter and encourage the child to do the same. Read the instructions to the child and ensure that he/she knows what to do.

**C** The focus letter is outlined in the top right. Draw the child's attention to the outlined letter in the top right of the page and ask "what sound does this letter make?" Encourage the child to touch, trace and colour in the letter.

**D** The illustration provides visual support for learning the focus letter and helps the child learn the letter/sound relationship within a meaningful context. Each illustration has the focus letter as its initial sound. Draw the child's attention to the illustration, name it and emphasise the initial sound. Read the instructions to the child and ensure that he/she knows what to do.

**E** The focus letter is highlighted in the alphabet to show alphabetical order. Encourage the child to identify any known letters in the alphabet. Focus on the sounds the letters make. Talk about the position of the focus letter in the alphabet.

**F** The think task encourages a higher level of thinking and challenges the child to think creatively. Respond to the think task with the child. The think tasks can be proposed while out shopping, during dinner, while driving or in the bath. Include older children and other adults in the discussion, to promote broader thinking.

**G** The supportive guide allows the child to practise writing the letter, reinforcing the basic movements required for its formation. Show the child where to start and ask the child to trace the letter. (refer to "Parents Guide - 3").

- Offer praise and encouragement for all efforts made by the child.
- Reissue the eWorksheets to provide repetition and build confidence.

# the letter W

NSW & ACT Foundation Style Script Sample

Internet Code: GR0002

\* helping kids learn and grow \*

the **popet**  
green **SPOT**

Ww Draw or paste something that starts with W.



Find and trace  
W on the whale.



Trace and write W.

a b c d e f g h i j k l m n o p q r s t u v w x y z

**think and SUGGEST**

What are 3 problems a whale might have ?

# the letter W

## Victorian, WA & NT Modern Cursive Script Sample

Internet Code: GR0002

★ helping kids learn and grow

the **popet**  
★ green SPOT

**W** Draw or paste something that starts with W.

W w Draw



Find and trace  
W on the whale.

Trace and write W.

a b c d e f g h i j k l m n o p q r s t u v w x y z

## think and SUGGEST

What are 3 problems a whale might have ?

# the letter W

## Queensland Script Sample

Internet Code: GR0002

★ helping kids learn and grow

the **popet**  
★ green ★ SPOT

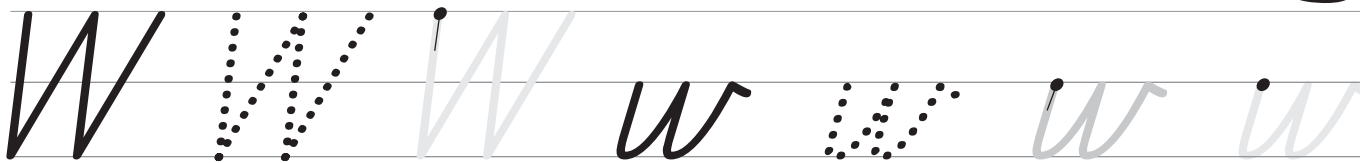
Draw

W w

Draw or paste something that starts with W.



Find and trace W  
on the whale.



Trace and write W.

a b c d e f g h i j k l m n o p q r s t u v w x y z

## think and SUGGEST

What are 3 problems a whale might have ?

# the letter W

Plain (International) Script Sample

Internet Code: GR0002

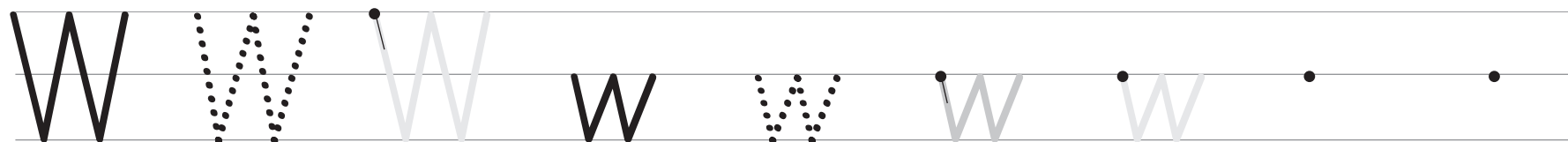
\* helping kids learn and grow \*

the **popet**  
green **SPOT**

W w Draw or paste something that starts with W.



Find and trace W on the whale.



Trace and write W.

a b c d e f g h i j k l m n o p q r s t u v w x y z

**think and SUGGEST**

What are 3 problems a whale might have ?